

Kuriki Japan Quality Hardware

HOTEL LEVER SERIES



Kuriki Japan



“Beauty” — in the name of
“Omotenashi”(hospitality).

The roots of Japan’s manufacturing quality is a consideration for users.

“Sakura” is designed for safety, easy gripping and to fit with each situation.

Its beautiful curve gently fits your palm, and produce quietness beauty even attached on door.

We express “Spiritual Beauty” with the floral language of cherry blossoms.

“Sakura” — A combination of
Japan’s technical capabilities and beauty.

Cherry blossoms are flowers that bloom in spring, which is the beginning of the seasons.

It is an expectation for the season and the new world.

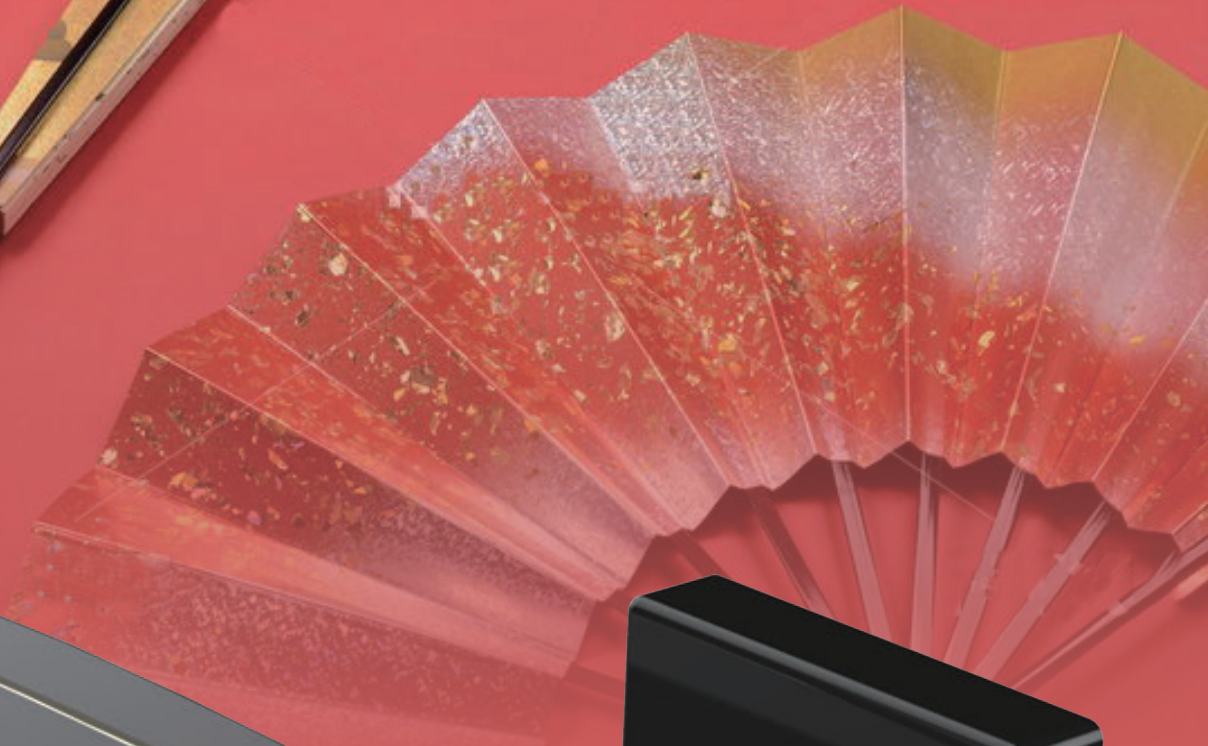
And the lever handle is the product that also leads people to a new space beyond the door.

The first impression at the moment of gripping the handle makes you imagine
the space that spread out behind the door.

桜

SAKURA
(cherry blossoms)

Design Series



扇子

SENSU

A design for respect guests.

Sensu has been used in Japanese traditional art such as tea ceremony, Noh, Noh comedy and Kabuki play. It shows respect for the other person by putting it between the people facing each other. The lever "SENSU" is produced on a concept of people who open the door, and a sense of respect for the guests.

"Omotenashi" that starts with the door.

The kanji for 扇 is consisted from 戸(door) and 羽(wing). Sensu has been also called "Suehiro", which means "spreading out like an opened fan". Japanese fan has been considered as a lucky charm since old times, because the leading edge is spread open when it is opened like wings. (A symbol of increasing prosperity). SENSU is a product that gives hospitality to the guests from the moment they open the door.

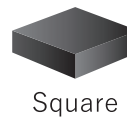
JAPAN QUALITY, HOTEL LEVER SERIES

The premium hotel lever series meets KURIKI highest standard of design, safety and quality. We have delivered records to major hotels in Japan including five-star hotels.

+ Various finish selection ※Please see the rightmost page for the Standard Finish List.

- Electric Paint Series (EP)
- Plating Series..... (P)
- Premium Plating Series (PP)
- Shot Blast Series (SB)
- Alumite Finish (AF)

+ ROSE



Aquila

(EP) (P) (PP) (SB) (AF)



Type 01

The design that looks like a bended column at two points. The diameter is adjusted to improve the holding comfortableness. It is also an excellent design in usability and safety.

Crux

(EP) (P) (PP) (SB) (AF)

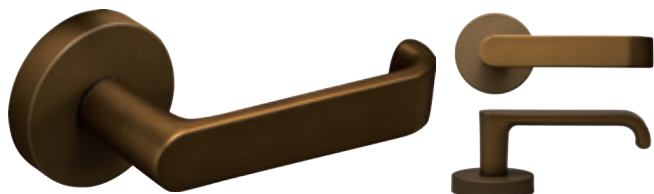


Type 02

We aimed at improving excellent operability and comfortable fit feelings when it is held with the hand. Streamlined sharpness and well-balanced design that matches all types of finish.

Draco

(EP) (P) (PP) (SB) (AF)

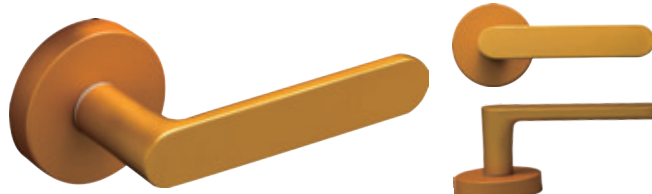


Type 03

The grip has a sufficient thickness and safety with its folded edge. Also excellent in the operability. This design is both functional and aesthetically pleasing.

Fornax

(EP) (P) (PP) (SB) (AF)



Type 04

The design is simple and fits naturally into other design. The gripping part has moderate thickness, and also excellent in safety with its rounded edge.

Grus

(EP) (P) (PP) (SB) (AF)



Type 05

Beautiful streamline design that flows from the bottom to the top. It is sharp but it fits gently in hands with a beveling process.

Hydra

(EP) (P) (PP) (SB) (AF)



Type 06

Gentle line with the rounded front edge of the gripping part. Gentle-looking with its rounded design, but also it remains the aspect of the original form, and has a unique figure.

Musca

EP P PP SB AF



Type 07

Designed in the image of bird's feather. Intricate curved surface, but it has high strength and is easy gripping.

Pavo

EP P PP SB AF



Type 08

It has a stately face with thickened front surface.

Pyxis

EP P PP SB AF



Type 09

Designed in the image of the flow of the wind or water, and it matches all design. It fits well in hands and has natural figure.

Cygnus

EP P PP SB AF



Type 11

We emphasized the comfort of use when it is taken hold. The thickness of grip and the beveling is more highlighted.

Volans

EP P PP SB AF



Type 13

The thickness of the handle is easy gripping, and it is designed in the image of the streamline with no resistance. Well-balanced between the functionality and unique figure.

Sagitta

EP P PP SB AF



Type 14

The handle is like a bended board. We pursued square shape of angular shaft as much as possible. Users are able to know the operation direction unconsciousness.

Norma

EP P PP SB AF



Type 15

A design created by silhouette of sharp line. The edgy shape looks high grade feeling.

Bootes

EP P PP SB AF



Type 16

Cutting a column diagonally and the section is simply joined. It has an universal beauty. Thickness is adjusted for easy gripping, and the functionality is also excellent.

Delphinus

EP P PP SB AF



Type 17

This design is heaviness, stability, and familiarity feeling when it has helded.
It is easy gripping, and is functionality also excellent.

Equuleus

EP P PP SB AF

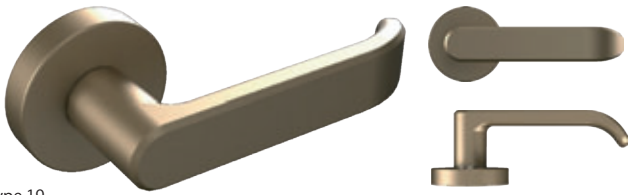


Type 18

It achieved good balance between slim shape and safety.
Easy gripping, and the functionality is also excellent.

Lupus

EP P PP SB AF



Type 19

Particularly considered the stately feeling and the safety.
Easy to put hands on, and have a good usability.

Ophiuchus

EP P PP SB AF



Type 20

Heavily design with its large surface.
The figure which is designed boldly to highlight the surface has an universal beauty.

Sensu

EP P PP SB AF



Type 21

Japan Design Series. Designed image is of the shape of a folding fan. An advanced big curving surface treatment achieved the both sensitive design and easy gripping.
We can customize the materials and the colors of each part.

Sakura

EP P PP SB AF



Type 22

Japan Design Series. Continuous curve line compose whole shape which is conceived from cherry blossom petals.
It is simple and unique design.
Please feel the fitting of hand grip.

※ Gloss or Mat, or the finish that is not shown in our product lineup is also available.
Please do not hesitate to contact us.
We offer free samples.

TEL (+81) 291-35-2636 FAX (+81) 291-35-2683
<http://www.kuriki-ss.co.jp/>

Standard Finish List

■ Electric Paint Series (EP)



SW (Satin Silver)



SA (Satin Amber)

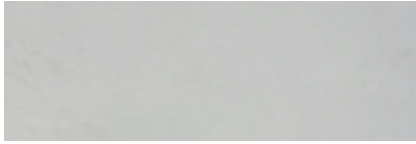


SG (Satin Gold)

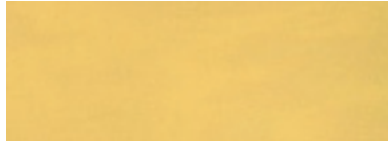


SB (Satin Black)

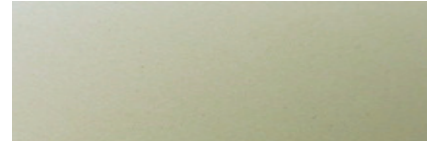
■ Plating Series (P)



CR (Chrome Plated)

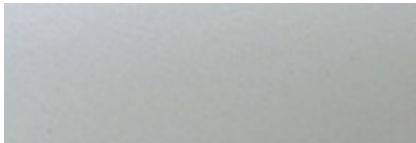


PG (Gold Plated)



SN (Soft Nickel)

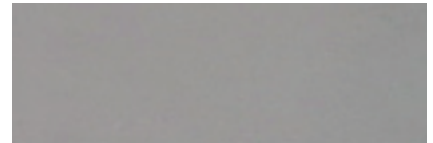
■ Premium Plating Series (PP)



PC (Pearl Chrome)

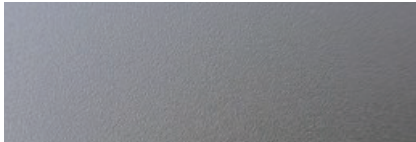


CG (Champagne Gold)

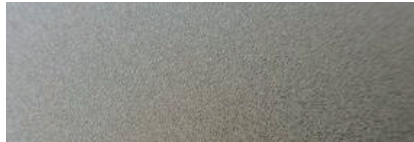


BC (BS Chrome)

■ Shot Blast Series (SB)



SPC (Shot Pearl Chrome)

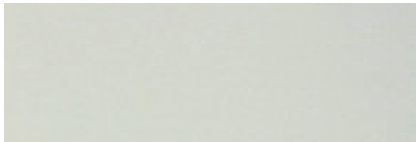


SCG (Shot Champagne Gold)

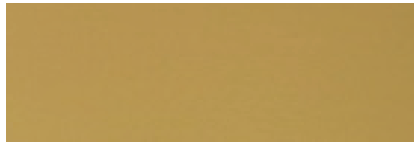


SBC (Shot BS Chrome)

■ Alumite Finish (AF)



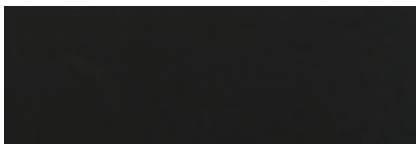
AS (Alumite Silver)



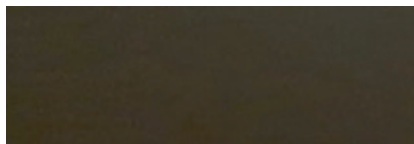
AG (Alumite Gold)



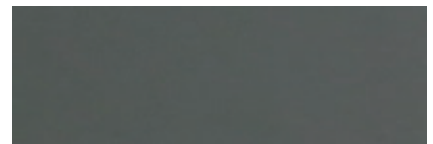
AA (Alumite Amber)



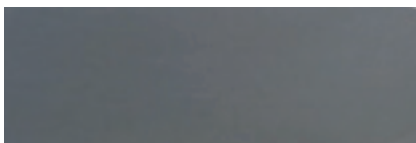
AB (Alumite Black)



ADA (Alumite Dark Amber)



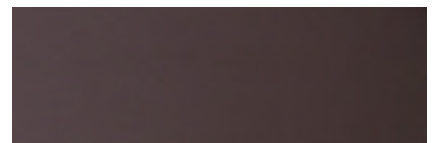
AGr (Alumite Gray)



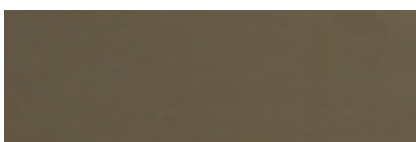
ABC (Alumite BC)



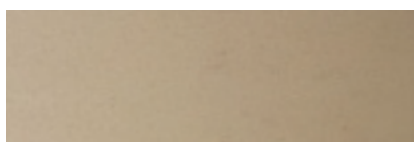
ANB (Alumite Navy Blue)



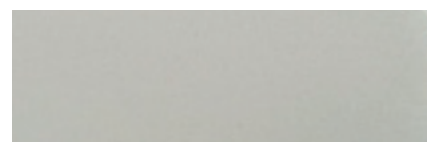
AR (Alumite Red)



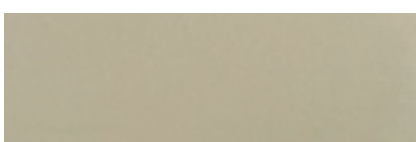
ABr (Alumite Bronze)



ACG (Alumite Champagne Gold)



APC (Alumite Pearl Chrome)



AWG (Alumite White Gold)



AP (Alumite Pink)



APu (Alumite Purple)

Kuriki Japan Quality

Kuriki Design



Good Design Award

We have won the prestigious award "Good Design Award" four times.



Universal Design

We are devoting much effort to develop universal design.



Patent / Utility Model

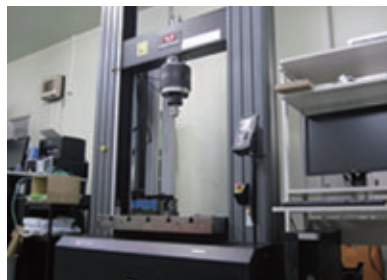
Five professionals belongs to the section. We have achieved 148 patents and 2 utility models. ※ Patents in Japan

Kuriki Safety



Design Review

KURIKI conducts additional checks. We check our products to ensure safety from diversified perspectives.



Endurance Test×200,000

We test our products for endurance which is more strict than specified criteria based on condition. We have invented our own endurance testing machine to examine our product two hundred-thousand times more.



Prevent Danger

KURIKI' s technology is available to prevent a crisis in everyday life.

Kuriki Quality

LIXIL TOTO
Link to Good Living

Panasonic

YKK AP 木と生きる幸福
住友林業



Customer Management

The customers' voices are sent to our development division and production division appropriately. This makes it possible to provide a fast response to our customers' requirements.

Quality First

Skills and experiences of Kuriki which have been cultivated throughout long history are inherited today.

ISO9001 (00029-1999-AQ-KOB-RVA)

We always hope to produce stable products through our operating manual and organization structure.



Kuriki Manufacture Co.,Ltd. HOTEL LEVER SERIES

1681 Onuki Namegata-city Ibaraki, 311-1724, Japan

TEL (+81) 291-35-2636 FAX (+81) 291-35-2683 <http://www.kuriki-ss.co.jp/>